

How to Provide a Seamless Travel Experience for Your Customers

Travelers are seeking a secure and safe experience with fewer touchpoints.

Whether it's for crossing borders, accessing e-services, or checking in to a flight, train, or cruise, travel service providers can now deliver digital-first processes ensuring a seamless traveler experience and achieving security and privacy mandates – all with a single proven and trusted solution.



Let's take a closer look at Entrust Identity Verification as a Service (IDVaaS)

1

Scan QR Code

To begin a journey scan a QR code from the website or use deep link if viewing website on mobile app.



2

Validate QR Code



3

Data Capture from eDocument

- Optical Character Recognition
- Document Eligibility



4

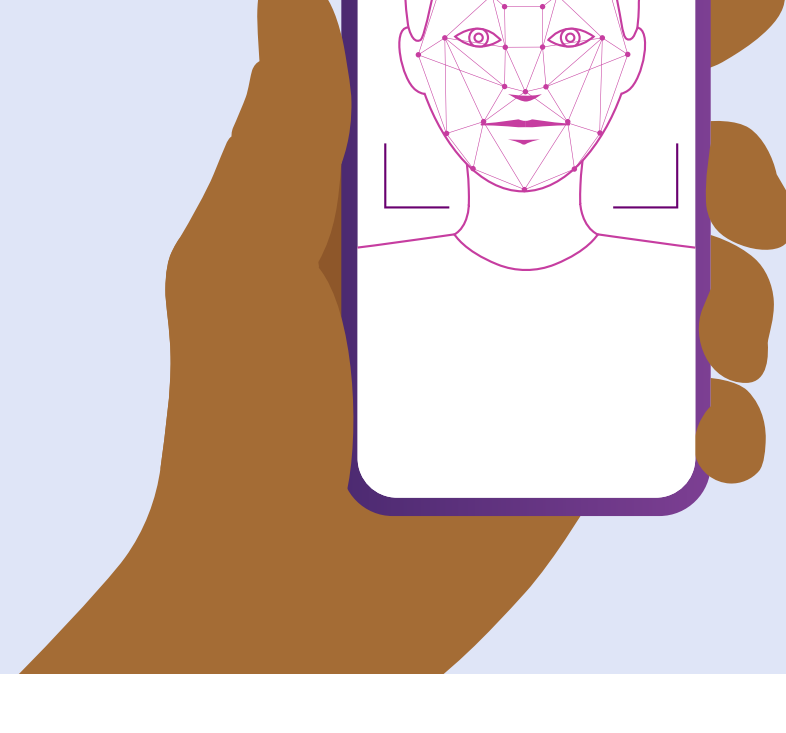
Read eDocument Chip

- Basic Access Control
- Active Authentication
- Chip Authentication



5

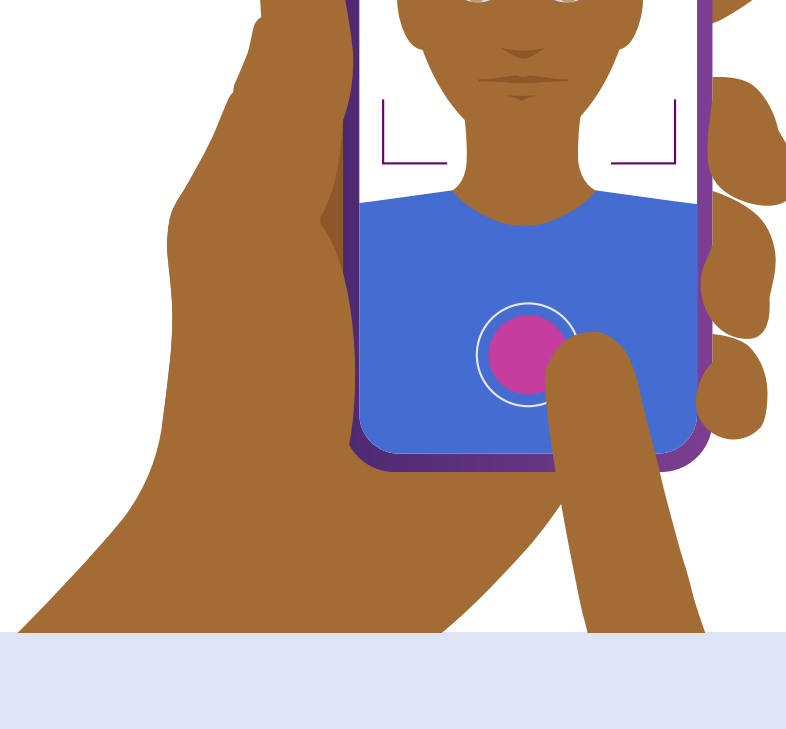
Liveness Assessment



6

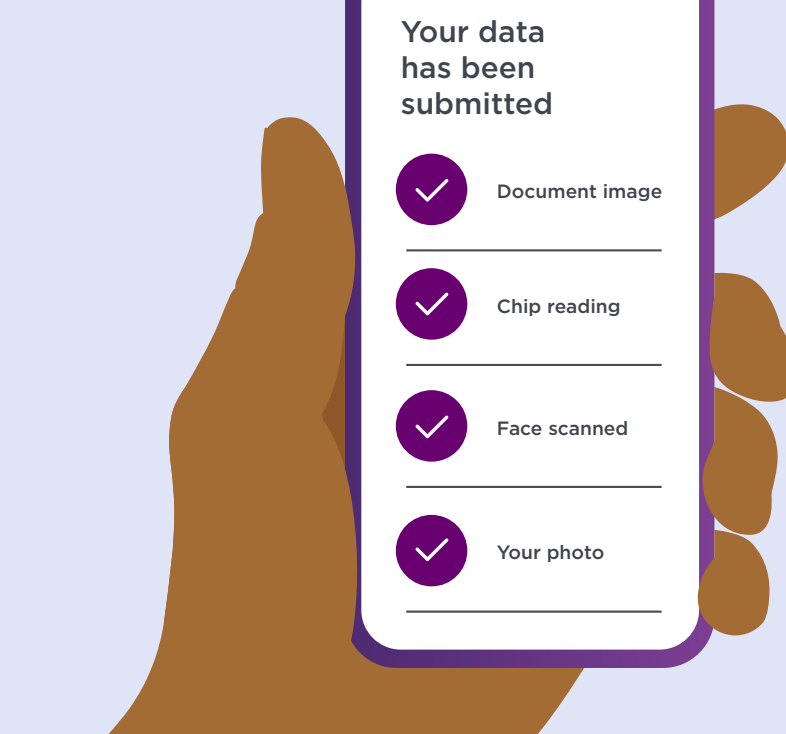
Capture Photo

Photo Quality Check



7

Submission



8

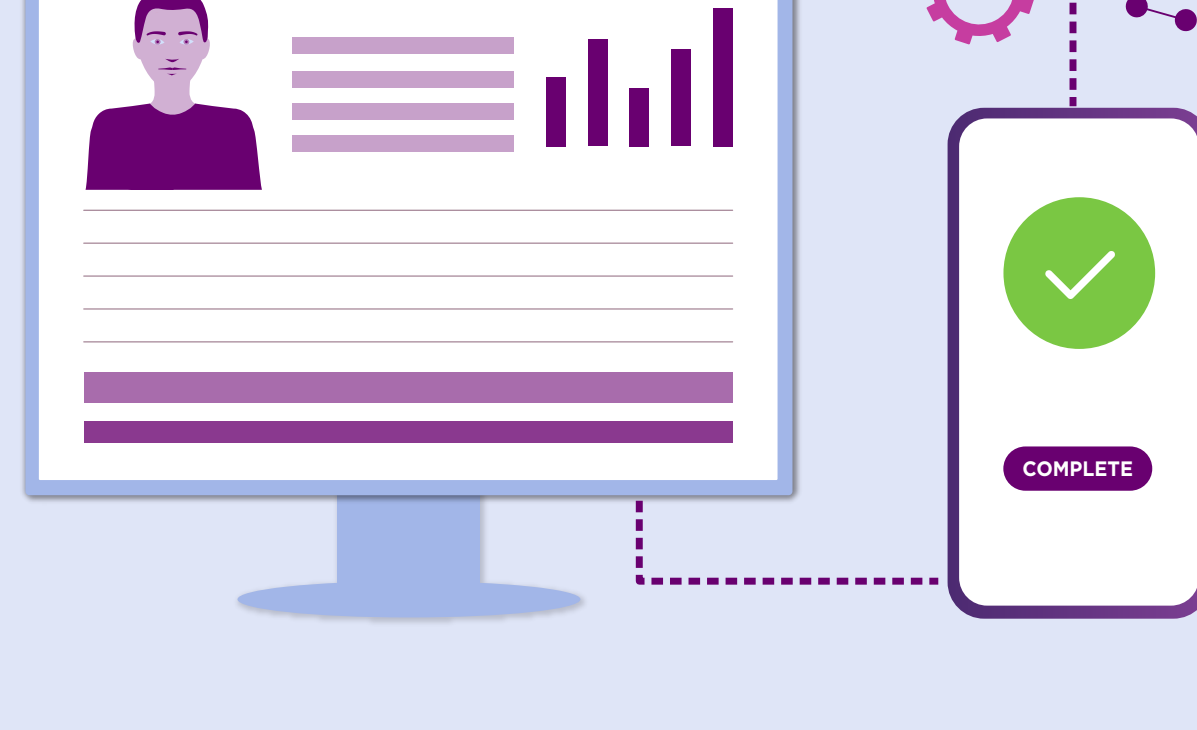
Assess Identity

- Passive Authentication
- Biometric Match
- Apply Thresholds



9

Transmit ID Assessment



Entrust IDVaaS by the Numbers

7.5M

Identities that have been verified remotely across the globe with our identity verification technology.

3,800

Different makes and models of smartphones available to implement remote digital identity verification.

30M

Annual transactions (in 2024) expected in the UK's first Electronic Travel Authorization (ETA) program, which will use Generic Identity and Document Verification, powered by Entrust IDVaaS.



Home Office



Entrust has powered innovative projects by leading immigration, border, and travel entities including the UK Home Office, the Eurostar international rail operator, and the Canada Border Services Agency.



To learn more about Entrust's identity verification technology and solutions, read our Seamless Travel ebook, **Seamless Travel Begins With Remote ID Verification**.

[Download Ebook](#)

To learn more, visit [entrust.com](https://www.entrust.com)